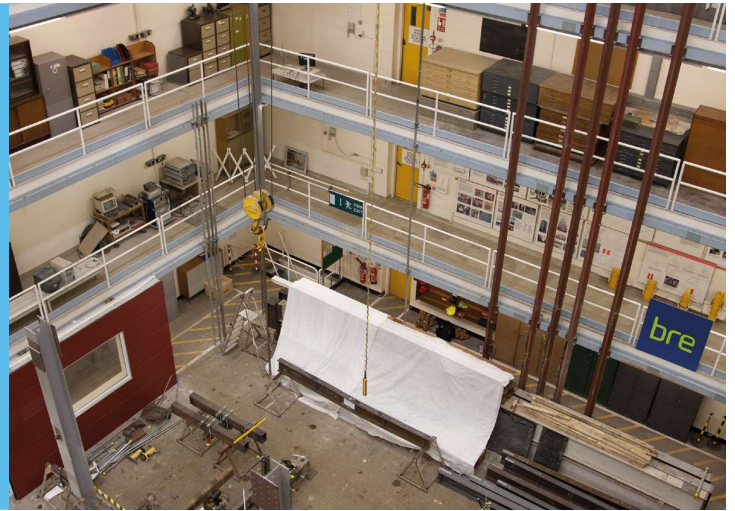


Environmental Technology Verification

Helping innovative products
reach the market



Spread the word about the benefits of your product with an Environmental Technology Verification.



What is ETV?

Environmental Technology Verification (ETV) is a flexible, user-friendly process specifically designed to break down the market barriers often encountered by innovative products simply because they are new or are presented by someone unknown to the industry.

Am I eligible?

If you have an innovative technology that's not fully covered by existing standards and that falls into the category of 'Energy' or 'Materials, Waste & Resources' which is better for the environment than relative alternatives and ready for market then you are likely to be eligible for an ETV.

Why do an ETV?

If you have a product that offers environmental benefits and does so with use of new technology that can't be assessed using the defined criteria of industry standards and certification schemes then an ETV could be just what you are looking for. BRE Global, part of the world recognised and respected BRE Group, is ready to work alongside you to verify the performance of your technology. Upon completion of the assessment we will give you an information packed **Statement of Verification**. You can use this to give financiers and customers the confidence they need to invest in your product and to support commercial bids and public tenders. It also saves you the time and expense of repeating tests and demonstrations for different clients.

Why use BRE Global for ETV?

BRE Global is a UKAS accredited inspection body, No. 4601 with extensive knowledge in the field of environmental technologies. This means we can confidently assist you in verifying the performance claims of your product. We share your passion for innovation – especially innovation that is great for the environment – and we are here to help you deliver the benefits of your product to an international audience. Utilising our extensive in-house testing capabilities, industry networks and vast experience we will work alongside you to develop a bespoke and fully costed verification plan that will fully demonstrate your technologies benefits.

What do I do next?

Contact us and tell us about your technology. You can provide product information by submitting an [ETV 'Quick-Scan' form](#) which can be found on our website.

etv@bre.co.uk
+44 (0)333 321 8811
www.breglobal.com

Our Head Office in Watford

Write to us at
 BRE, Bucknalls Lane,
 Watford WD25 9XX

Sat nav
 use post code WD25 9NH

Tweet us
 We are @BRE_group on Twitter